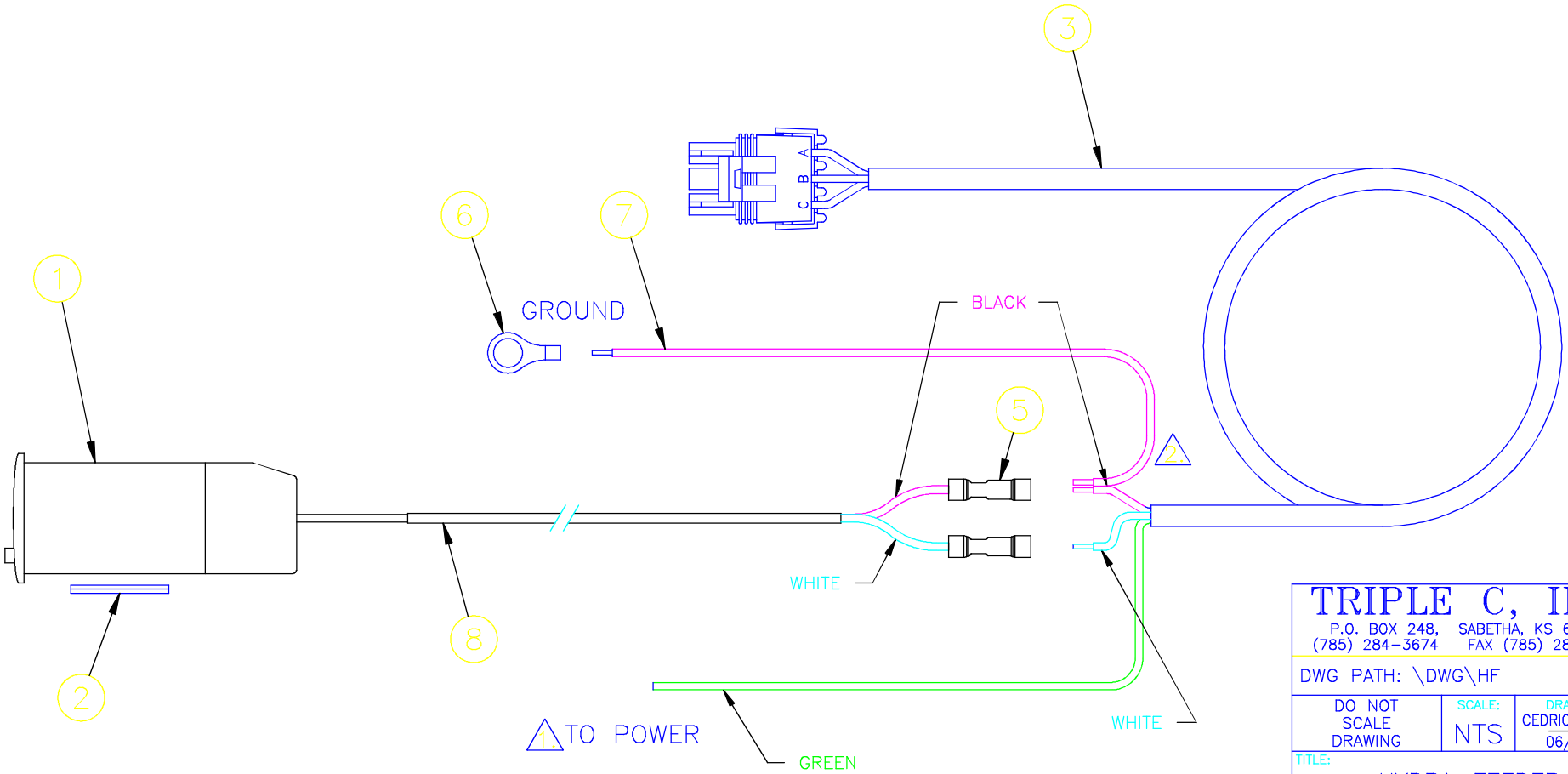


NOTES:

1. USE ITEM 9, QUICK SPLICE, TO CONNECT TO HYDRAULIC PUMP POWER WIRE ON A HYDRA BED SYSTEM.
- CONNECT TO SWITCHED AND FUSED POWER LEAD FOR OTHER APPLICATIONS.
2. STRIP JACKET FROM WIRES AND MAKE CONNECTIONS AS SHOWN.
3. PROVIDED WIRES MAY BE CUT TO LENGTH TO MAKE CONNECTIONS.

ITEM	PART NUMBER	DESCRIPTION	QTY
1	N121.01A	DIGITAL DISPLAY	1
2	VELCRO	VELCRO FASTENER	1-1/2 IN
3	HF12-46	SENSOR HARNESS, 20 FT	1
4	(REMOVED)		
5	BC422005	BLUE BUTT CONNECTOR	2
6	RT152565	RING TERMINAL, 5/16	1
7	W37140	14 GA WIRE, BLACK	2 FT
8	W62185	18/2 JACKETED WIRE	3 FT
9	QS905595	QUICK SPLICE, BLUE	1



**TRIPLE C, INC.**  
P.O. BOX 248, SABETHA, KS 66534  
(785) 284-3674 FAX (785) 284-3931

DWG PATH: \DWG\HF

DO NOT SCALE DRAWING

SCALE: NTS

DRAWN BY: CEDRIC HEINIGER  
06/01/00

TITLE: HYDRA-FEEDER SENSOR/COUNTER KIT

DRAWING NUMBER: HF12-48

REV: A